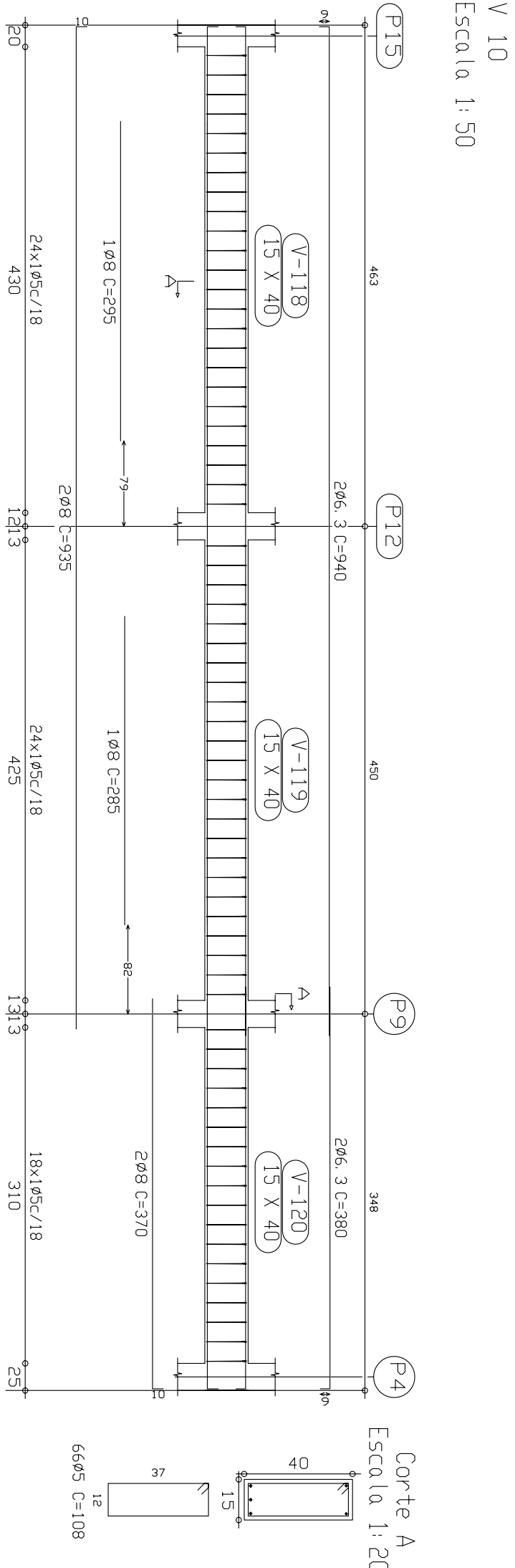
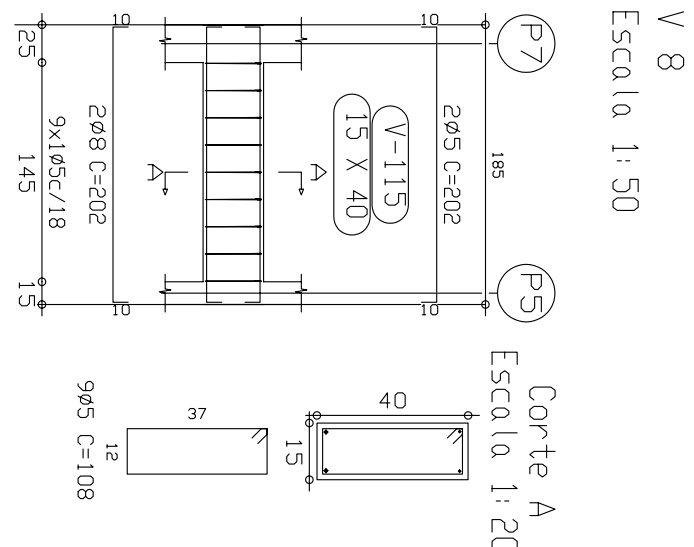
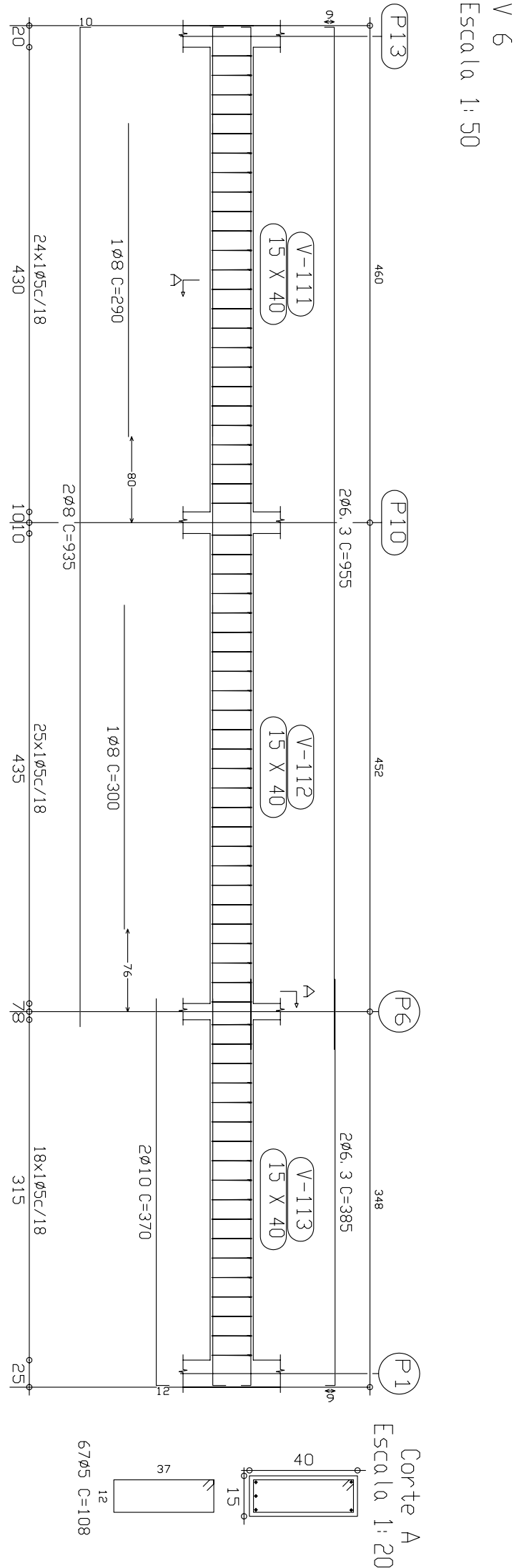
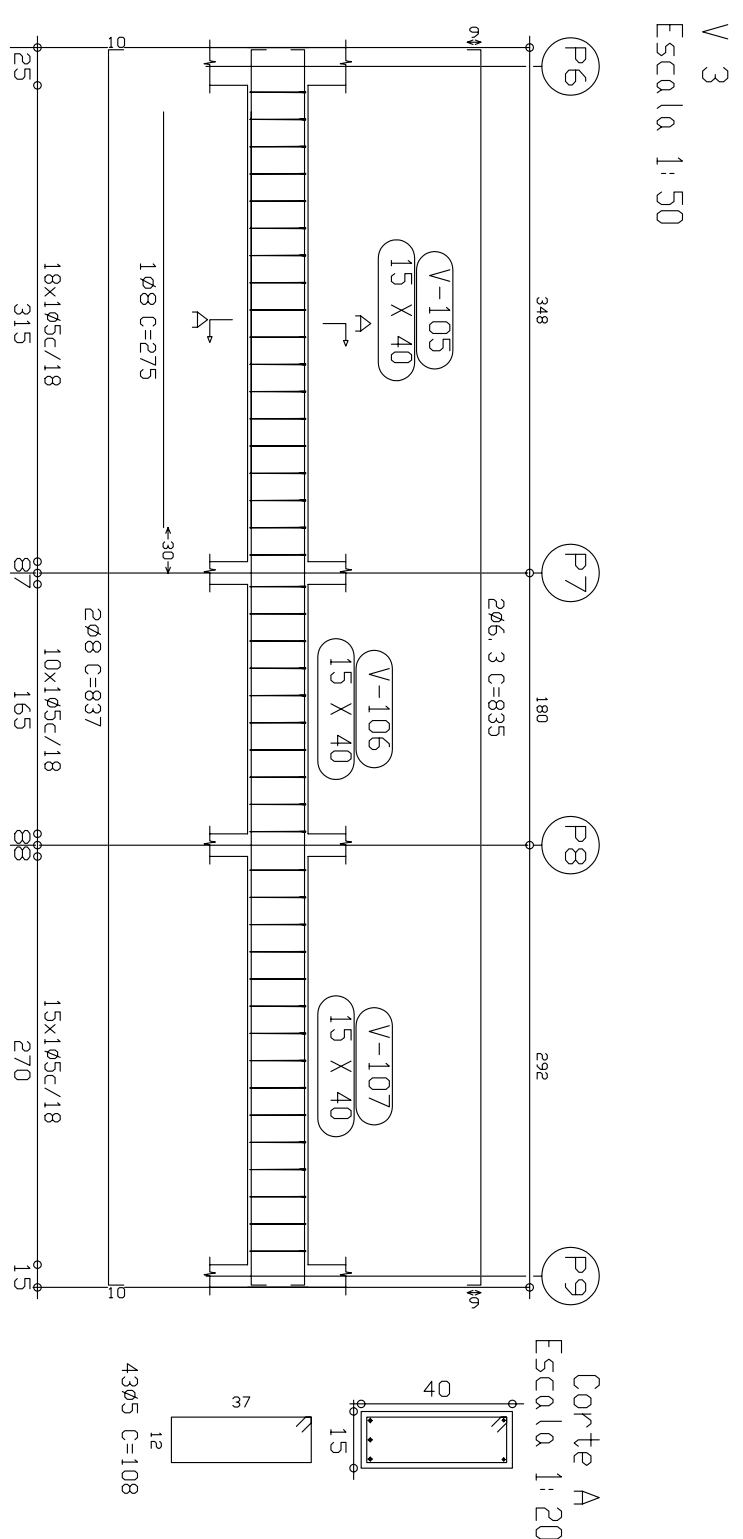
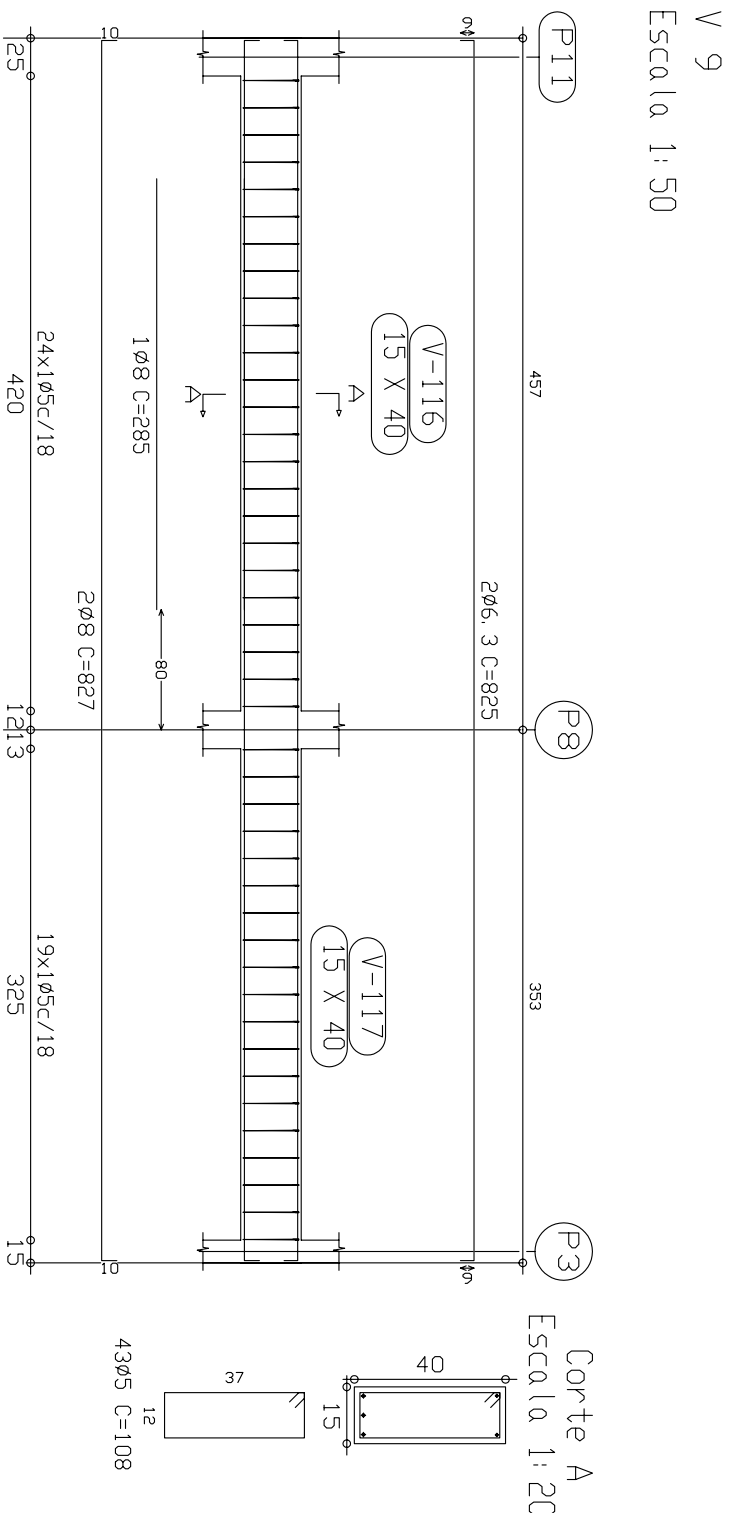
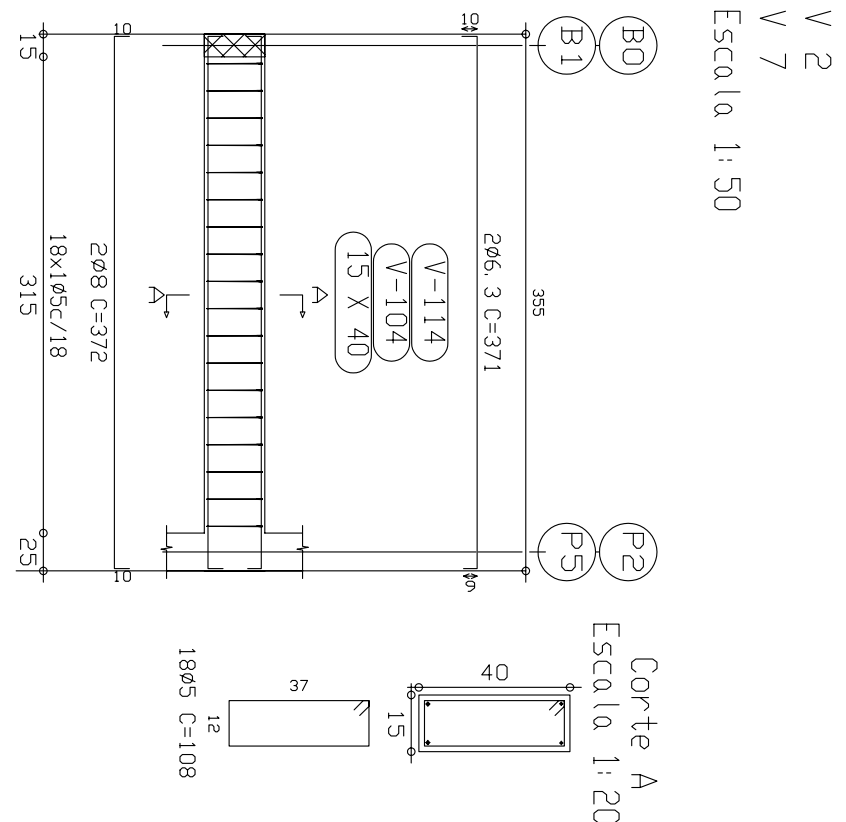
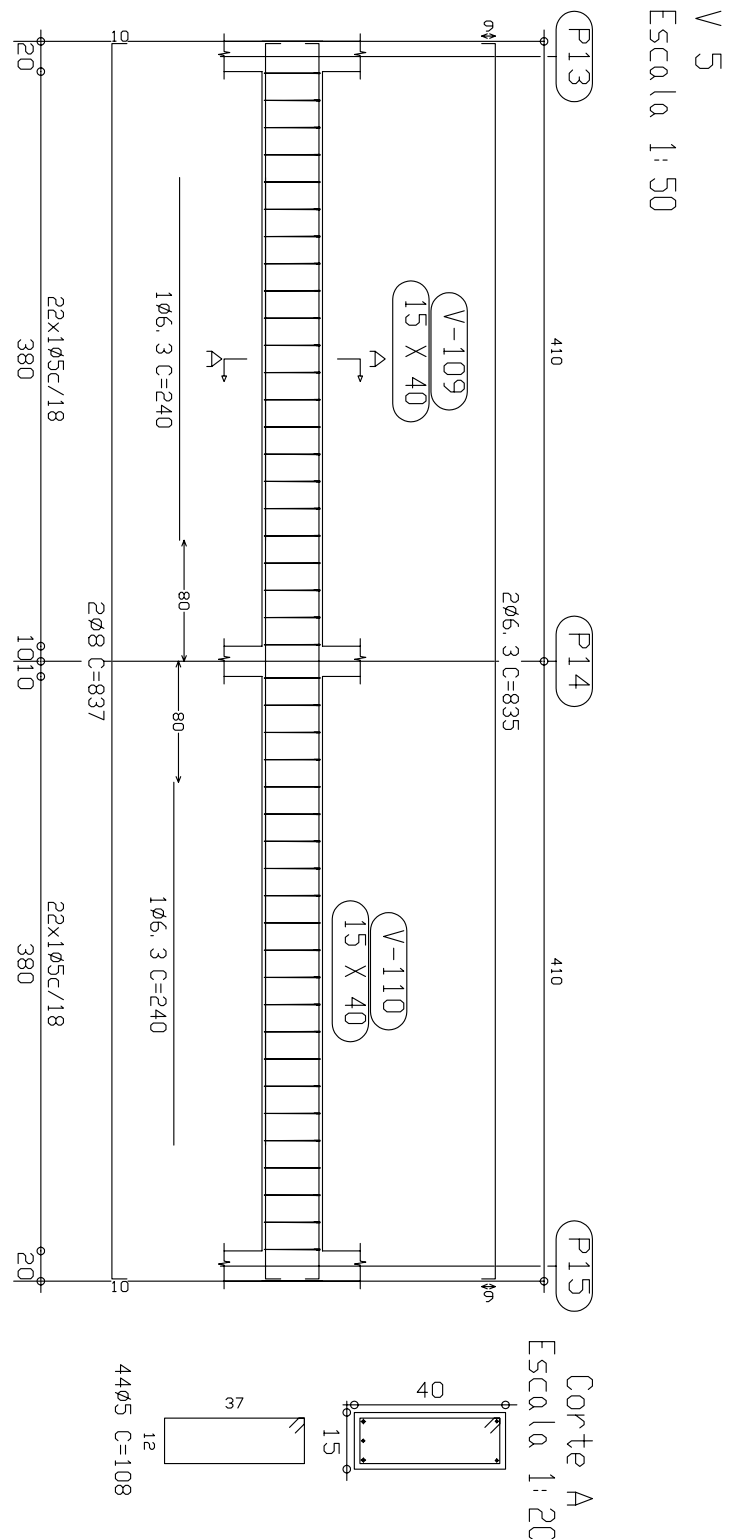
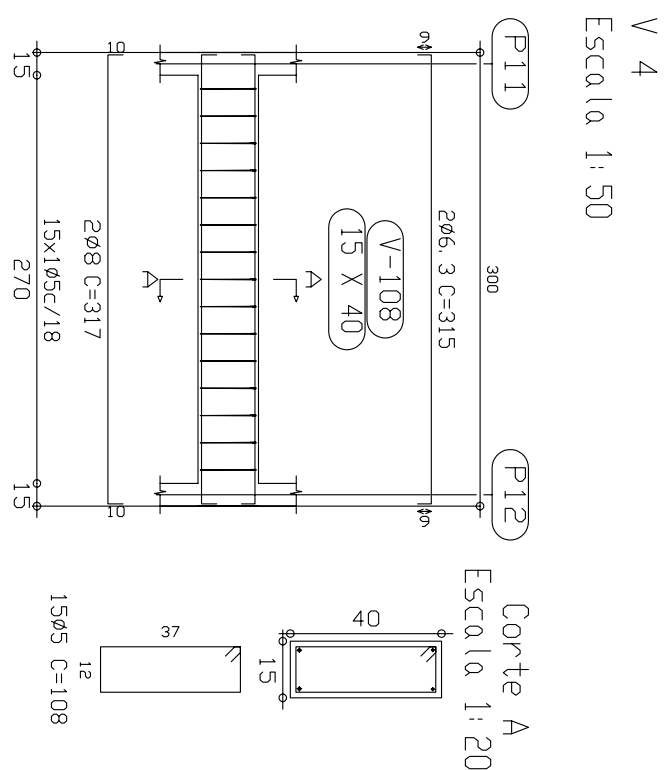
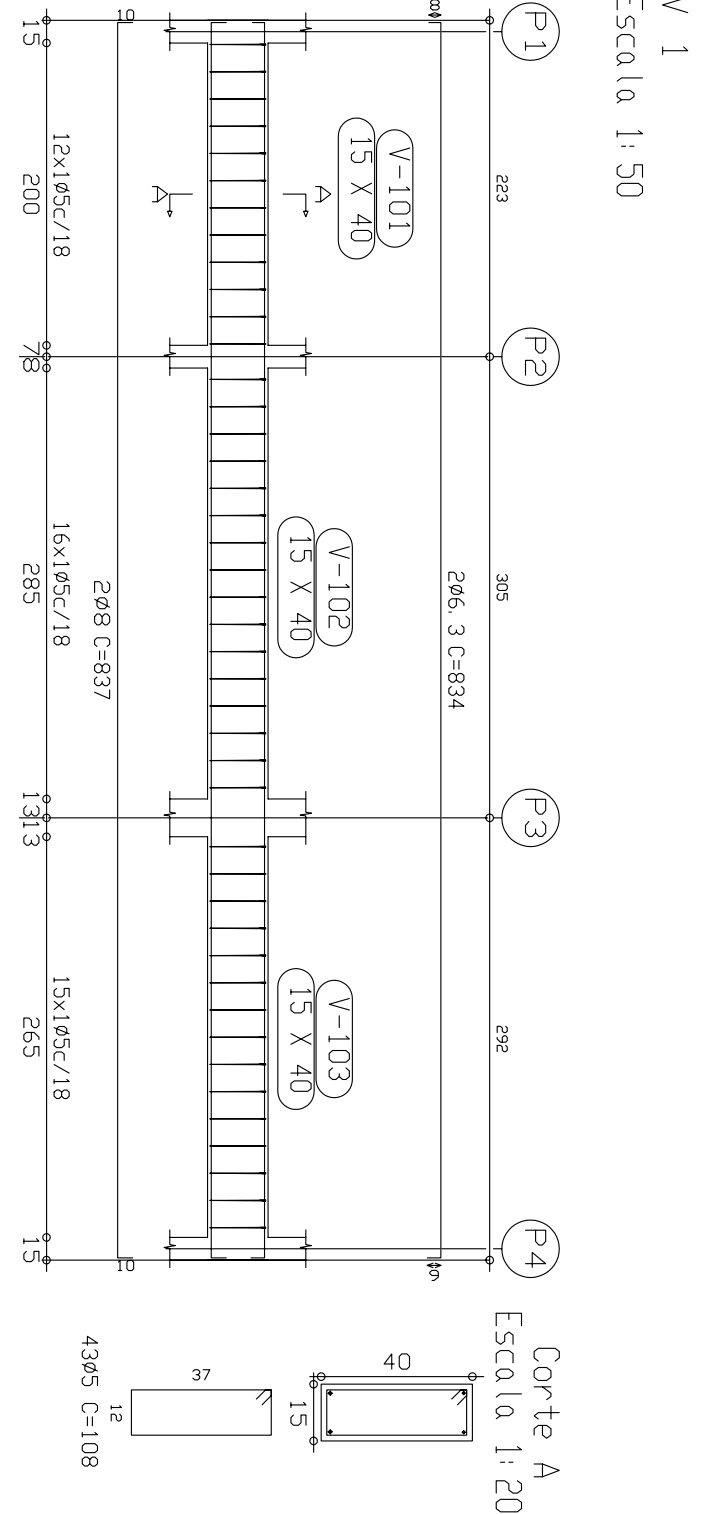


PLANTA DE FORMAS VIGAS BALDRAME

ESCALA: 1/50

CONCRETO: C25 - 25MPa

Baldrame - Superfície total: 10,14 m²				
Elemento	Formas (m²)	Volume (m³)	Bornas (kg)	Comando (kg)
VIGAS: Fundo	9,57	4,18	180	
Forma lateral	50,80			
Pilares (Sup. Formas)	0,00			
TOTAL	60,37	4,18	180	
Índices (por m²)	5,954	0,412	17,75	



RESUMO AÇO	Comp. Total	Peso (com perdas)	Total
VIGAS	(m)	(kg)	
CA-50-A Ø6,3	145,7	40	
Ø8	154,1	67	
Ø10	7,4	5	
CA-60-B Ø5	399,3	69	
Total			181



MUNICÍPIO DE CHOPINZINHO

GESTÃO 2017 - 2020

DIVISÃO DE PLANEJAMENTO E PROJETOS

ESTRUTURAL - BALDRAMES

Tipo da Obra: Copa nova

Local da Obra: Médio Esportivo Municipal

Proprietário: PREFEITURA MUNICIPAL DE CHOPINZINHO

Projeto: Prefeitura Municipal

Execução: ALVARO DENIS GEM SOULARO

Projeto: CHRISTIANO DOSSA SILVEIRI

01